



# ACTION CARD



START



2023

# ABOUT US



## THE HONG KONG MALAYSIAN STUDENT ASSOCIATION

The Hong Kong Malaysian Student Association (HKMSA) is a non-profit student organisation established in 2019. With over 350 student members across 9 universities, we are currently the largest Malaysian student community within Hong Kong.

HKMSA aims to provide a platform for Malaysian students and graduates in Hong Kong to meet, connect and establish long-lasting relationships. We also strive to continually enhance the welfare of all Malaysian students through providing them with support and guidance throughout their university life. With the passion and drive to serve our fellow Malaysians, we hope to be all Malaysian students' go-to place for support and information pertaining to their lives in Hong Kong.





# ITINERARY



**0930**

**REGISTRATION**

**1000**

**OPENING**

**1020**

**ICE-BREAKING**

**1130**

**CITY HUNT**

**1730**

**FINAL SPIN OFF**

**1830**

**CLOSING**

**1900**

**DINNER**



# JOBAMAS AND THEIR FAV PLACE



Q JOMA



**PORTIA**

**JUST SAY NO!**

**UNI: CUHK**

**MAJOR: INTEGRATED BBA**

**FAV: STAR STREET**

**WHY: DOESN'T FEEL LIKE HONG KONG**

**UNI: CUHK**

**MAJOR: GLOBAL ECONOMICS & FINANCE**

**FAV: DISNEYLAND**

**WHY: I HAVE AN ANNUAL PASS :)**

Q JOMA



**YUN CHING**

**DEBT COLLECTOR**

# JOBAMAS AND THEIR FAV PLACE



Q **JOBA**



**MARCUS**

**JUST SAY NO!**

**UNI: HKBU**

**MAJOR: FILM AND TELEVISION**

**FAV: MONGKOK**

**WHY: GOOD FOOD AND ARGYLE CENTRE**

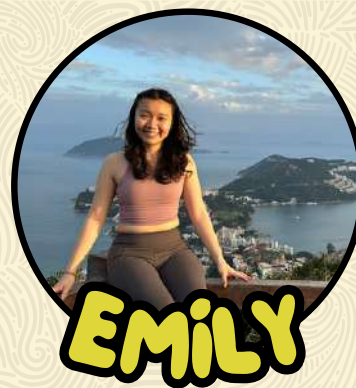
**UNI: HKU**

**MAJOR: MEDICINE AND SURGERY (MBBS)**

**FAV: ROOFTOP SPOT OF M+ MUSEUM**

**WHY: CALM SERENITY WITH  
FLUORESCENT BACKDROP**

Q **JOMA**



**EMILY**

**JUST SAY NO!**

# JOBAMAS

## AND THEIR FAV PLACE



Q JOBA



**YUNG ZHEN**

**DEAL BREAKER**

**UNI: HKU**

**MAJOR: FINANCIAL TECHNOLOGY**

**FAV: TSIM SHA TSUI**

**WHY: THE SEA VIEW IS FABULOUSSS**

**UNI: HKU**

**MAJOR: ACTUARIAL SCIENCE**

**FAV: HKU**

**WHY: I LIKE TO STUDY HEHE**

Q JOBA



**Lik YEE**

**DEAL BREAKER**

# JOBAMAS AND THEIR FAV PLACE



Q JOMA



**GILLIAN**

**JUST SAY NO!**

**UNI: HKU**

**MAJOR: FINANCIAL TECHNOLOGY**

**FAV: CCT**

**WHY: BECAUSE I LOVE FRENCH TOAST**

**UNI: CUHK**

**MAJOR: QUANTITATIVE FINANCE**

**FAV: TAI PO MARKET**

**WHY: AUNTY UNCLE THERE VERY NICE**

Q JOBA



**YIN FENG**

**IT'S MY BIRTHDAY**

# GROUPING

## Q JOMA



**PORTIA**

**GROUP 1**

## Q JOZAI/ JOLUI

CHRISLYN SIA XIN YEN (HKU)

IMAN NADHEERAH BINTI KHAIRUL FAIZI (HKUST)

YONG SONG LIN (POLY U)

YEE HOCK YIN (CUHK)

LHO JINWOONG (HKUST)

## Q JOZAI/ JOLUI

POON WING YU (HKU)

SIOW TERNG JUEN (HKUST)

LEE EN YA (CUHK)

CHEAH YU JIN (CITYU)

COLIN TAN KAI CHIEN (HKUST)

NICOLE GOH (UNSW)

## Q JOBA



**MARCUS**

**GROUP 2**

# GROUPING

## Q JOMA



**EMILY**

**GROUP 3**

## Q JOZAI/ JOLUI

CHONG KAITING (CUHK)

YEW JIN CHEN (HKBU)

KEITH CHAN (HKU)

CHUA ZHI YU (HKUST)

TAN ZI NING (CITY U)

ASHLEY FOO SHENG MIN (HKUST)

## Q JOZAI/ JOLUI

LEE ZI JIAN (HKUST)

SYDNEY ONG XIN YI (CITY U)

LAU YU XUAN (CUHK)

LOW WEN HUI (HKUST)

TAN YU XUAN (CITY U)

HONG YUN YA (HKUST)

## Q JOBA



**Lik YEE**

**GROUP 4**

# GROUPING

Q JOMA



**GILLIAN**

**GROUP 5**

Q JOZAI/ JOLUI

SUNG PIK YING (HKUST)

TIN ZI YIK (CUHK)

HO ZHE SHEN (CUHK)

PANG ZI YANG (HKUST)

PANG YUK TAT (HKU)

Q JOZAI/ JOLUI

CHENG XING JONG (HKBU)

LAU WEI SIN (HKU)

PEARLYNN KHOO I-YEE (HKUST)

GAN YONG XU (CUHK)

GOH EAN PING (HKUST)

Q JOMA



**YUN CHING**

**GROUP 6**

# GROUPING

Q JOBA



**YUNG ZHEN**

**GROUP 7**

Q JOZAI/ JOLUI

HUI HIU YAU (HKU)

SIW YI LING (CUHK)

CHIN JIE HENG (CITY U)

LIM YEN THUNG (CUHK)

TIFFANY CHIU KE SHUEN (HKUST)

Q JOZAI/ JOLUI

LOW LI YU (POLYU)

WONG MENG HWEI (HKUST)

IGNATIUS TAN (HKUST)

SEAH ZHI HAO (CUHK)

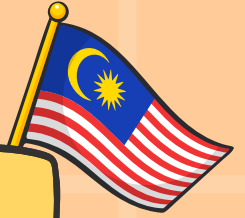
AIDAN WONG WENG SENG (HKU)

Q JOBA



**YIN FENG**

**GROUP 8**



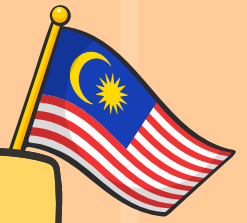
# MEMBERSHIP SIGN UP



[WWW.THEHKMSA.COM/](http://WWW.THEHKMSA.COM/)



**ENJOY PERKS & DISCOUNTS!**



# EVENT SPONSORS

## PLATINUM SPONSORS



## GOLD SPONSOR



## VENUE SPONSOR



# THANK YOU



**START**

**HKMSA O-DAY**



# ESSENTIALS

1

**UMBRELLA**

2

**WATER**

3

**SUNBLOCK**

4

**MOSQUITO REPELLENT**

5

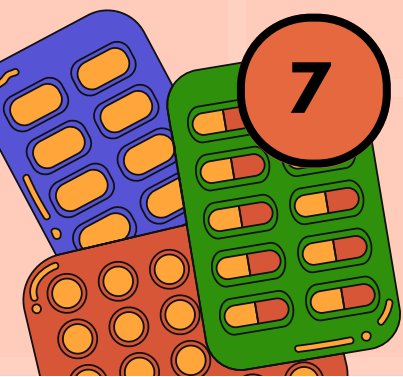
**TISSUE**

6

**POWER BANK**

7

**FIRST AID (OPTIONAL)**



# SAFETY

## Traffic Safety

- Always respect traffic rules (No jaywalking, always use pedestrian crossing to cross road, etc)

**While we understand the urgency to complete the task, please remember not to leave your group members behind**

## Handling Injuries / Medical Condition

Each of you will received plasters from the committee. If you need extra medical supply, please inform the Emergency Crew first then buy it from the nearest shop. Make sure you keep the receipt for claiming after arriving at the Jardine House, Central. The receipt **must only have the first aid items that you bought** when claiming your expense, otherwise, we will reject it.

If there is any injuries or medical conditions that you cannot handle on your own (e.g. heat stroke, bone fracture), please contact the Key Personnel (listed below) **immediately** to update HKMSA about the situation. If the situation require immediate emergency care (e.g., heart attack, seizure, serious allergic reaction), please **immediately dial 999** first to seek medical help and afterwards, report it to the Key Personnel to notify the committee about the situation.

# SAFETY

## Bad Weather

If it happens to be a heavy raining day, please seek shelter to ensure everyone's safety. Afterwards, communicate in the Emergency Crew group to update your current location. Stay tuned for the Announcement group for any further instructions

### Key personnel:

**Valerie +852-6332 9877**

**Ming Xuan +852-6198 9148**

**Kah Yan +852-9411 9453**

**Mandy +852-9677 1709**

In any case, please keep your fellow group members posted about the situation at hand. If you think it would not be best to proceed with anything, please discuss it with them and get a consensus prior to making any decision.





**START**

**HKMSA O-DAY**

**2023**

## ANNOUNCEMENT COMMUNITY

**Everyone** involved in the Orientation day will be in this Announcement Community Group.

In this Announcement Community group, you will find:

- General announcements (e.g., Bomb related information, Which firm tasks were completed and acquired, Game reminders such as safety, lunch break)

Only Orientation Day committee members are allowed to make announcement in this group.

## WHATSAPP SUBGROUP

Each team will have their own subgroup in the WhatsApp community. In your subgroup, the group members will be as follow:

- Key personnel
- Joba / Joma (group leaders)
- Jozai / Jolui (group members)
- One EXCO who follow you in person throughout the game
- One EXCO who is stationed at Headquarters (HQ)

In your subgroup, you will receive some Bomb-related information and the trigger to activate the challenge.

You also can ask any enquiries or clarification about the game in the group and direct it to the EXCO members.

Everyone in your group is allowed to talk in the group.



## EMERGENCY CREW

This group is used to relay any emergency information or situations to the organizing committee. In this group, the group members are as follow:

- Key personnel
- All Joba / Joma
- All EXCOs who are following the team in the game

If you encounter any emergencies, please communicate it using this subgroup. The Key personnel will contact you immediately upon receiving your message.



# ANNOUNCEMENT SYSTEM

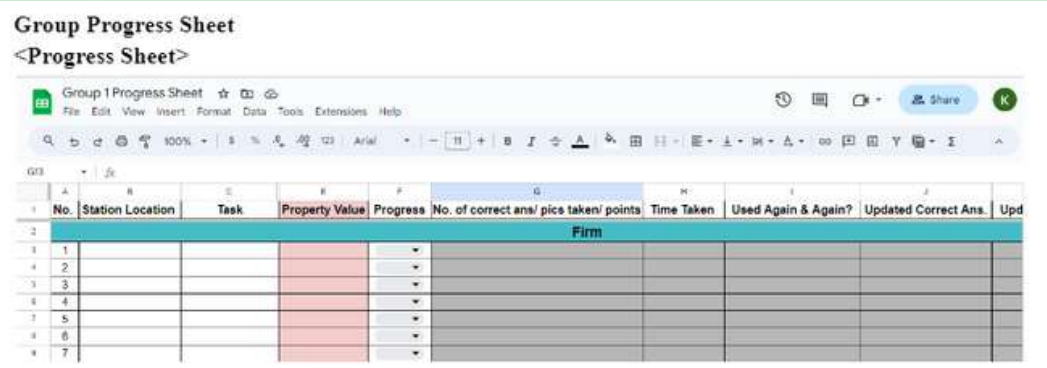
START

HKMSA O-DAY

## GROUP PROGRESS SHEET (PROGRESS SHEET)

Every group will have a Progress Sheet. This spreadsheet is used to keep track of the tasks and challenges completed by your group. The HQ EXCO who is assigned to your group will be responsible in updating the Progress Sheet. Your group will have **VIEWING access** to the spreadsheet.

Example of the Group Progress Sheet:



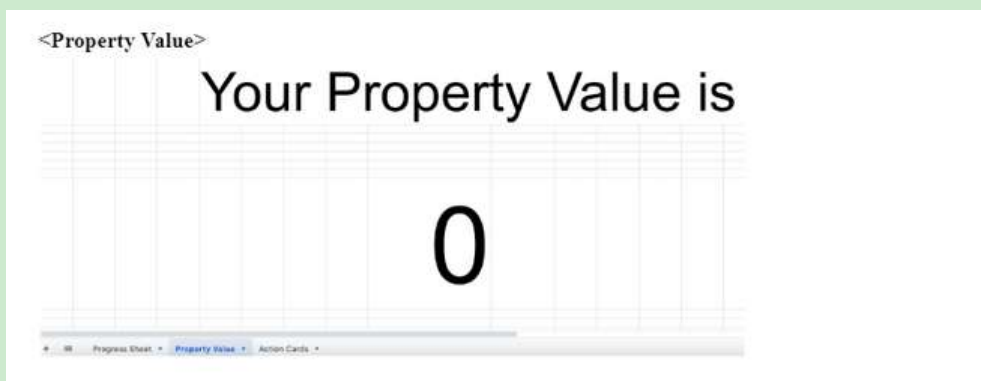
Group Progress Sheet  
<Progress Sheet>

| No. | Station Location | Task | Property Value | Progress | No. of correct ans/ pics taken/ points | Time Taken | Used Again & Again? | Updated Correct Ans. | Upd |
|-----|------------------|------|----------------|----------|--|------------|---------------------|----------------------|-----|
| 1   |                  |      |                |          |  |            |                     |                      |     |
| 2   |                  |      |                |          |  |            |                     |                      |     |
| 3   |                  |      |                |          |  |            |                     |                      |     |
| 4   |                  |      |                |          |  |            |                     |                      |     |
| 5   |                  |      |                |          |  |            |                     |                      |     |
| 6   |                  |      |                |          |  |            |                     |                      |     |
| 7   |                  |      |                |          |  |            |                     |                      |     |

## GROUP PROGRESS SHEET (PROPERTY VALUE)

As your group completes more tasks and acquires more property, your group's property value will be automatically calculated when the group progress sheet is updated. Your group can view your group's total property value in the Group Progress Sheet by clicking at the "Property Value" tab underneath.

The property value in the beginning of the game will be 0.





## PROPERTY STATUS

The Property Status sheet is where you can find the status of each task. For example, there are some tasks that can only be rewarded to the first team completing it. Hence, you can check in the Property Status sheet to see if this task has been completed by another team or else your team can claim it first before anyone else.

Another example is that there are some tasks where groups have to compete with each other to get the highest score. Your group can view in the Property Status sheet to see the ranking of each group for that task.



# GAME OUTLINE

START

HKMSA O-DAY

# PROPERTY TYPES

## FIRM

These properties are attained by the first team that completes the task.

## CHALLENGE

Teams can compete for these properties by achieving the highest scores in specified challenges.

## FIRM+

These feature a pair of properties consisting of a firm and a challenge property.

## BOOSTER

Boosters are tasks that can be completed by any team to increase their wealth.



The group must inform the HQ EXCO once they reach a station.  
"Hi, we have reached XXX station to do Task (No.) [Task Type]"

# STATIONS & TASKS

## Q FIRM TASKS

|   | Task   | Value<br>(millions) |
|---|--|---------------------|
| 1 | Peak Tram Kennedy Station (1 minute vlog)              | 3                   |
| 2 | HSBC Building (Central) (Group picture with lion)      | 6                   |
| 3 | Bank of China Tower (Central) (Group Picture)          | 1                   |
| 4 | Exchange Square (Central) (Bear Imitation)             | 1                   |
| 5 | Mystery Building (Group Photo)                         | 2                   |
| 6 | Sir Cecil's Ride Stream (Group Picture)                | 6                   |
| 7 | Flower Market (Prince Edward) (Flowers Photo Taking)   | 3                   |
| 8 | Tamar Park, Admiralty (Pictures of Outdoor Activities) | 3                   |

\*for detailed task, please refer to the Station + Task PDF

# STATIONS & TASKS

## Q CHALLENGE TASKS

|    | Task  | Value<br>(millions) |
|----|---|---------------------|
| 9  | LKF (Instagram Reels)                         | 3                   |
| 10 | St John's Cathedral (Riddles)                 | 5                   |
| 11 | Avenue of Stars (TST) (Avenue Name Listing)   | 3                   |
| 12 | Choi Hung Estate (Panorama Challenge)         | 6                   |
| 13 | Wong Tai Sin Temple (Bamboo Cylinder Shaking) | 6                   |
| 14 | Toy Market, Sham Shui Po (Best Deals Hunting) | 3                   |
| 15 | Kowloon Park (Bird Park Quiz)                 | 3                   |

\*for detailed task, please refer to the [Station + Task PDF](#)

# STATIONS & TASKS

## Q CHALLENGE TASKS

|    | Task                                      | Value<br>(millions) |
|----|---|---------------------|
| 16 | Blue House [1] (Wan Chai) (HK Menu Quiz)  | 4                   |
| 17 | Blue House [2] (Wan Chai) (MYS Menu Quiz) | 3                   |
| 18 | Cultural Centre (TST) (Song Guessing)     | 4                   |
| 19 | Aberdeen Promenade (One Breath Paragraph) | 6                   |
| 20 | Wan Chai Golden Bauhinia Square (Firm+)   | 2                   |
|    |   | 1                   |

\*for detailed task, please refer to the [Station + Task PDF](#)

# STATIONS & TASKS

## Q FIRM+ TASKS

|    | Task                                       | Value<br>(millions) |
|----|--|---------------------|
| 21 | Jordan/ Yau Ma Tei (Temple Street) (Firm+) | 2                   |
| 22 | TKO (Firm+)                                | 8<br>7              |
| 23 | Kam Tin Mural Village (Firm+)              | 10<br>8             |
| 24 | HK Railway Museum (Tai Wo) (Firm+)         | 8<br>5              |

\*for detailed task, please refer to the [Station + Task PDF](#)

# STATIONS & TASKS

## Q BOOSTER TASKS

|    | Task  | Value<br>(millions) |
|----|---|---------------------|
| 25 | HK Statue Square (Central) (Group picture)                    | 3                   |
| 26 | Wellcome(Group Picture with 10 Different Store)               | 4                   |
| 27 | Malaysian Food (Visit our Partner Restaurants)                | 4                   |
| 28 | Geogusser Quiz (Play in HQ)                                   | 2                   |
| 29 | Taxi (Picture with 3 Different Colored Taxi)                  |                     |
|    | -Blue   | 3                   |
|    | -Green  | 2                   |
|    | -Red  | 1                   |
| 30 | Michelin Bib Gourmet Restaurants<br>(Group Picture with Logo) | 1 per food          |
|    | (Dine in Group Picture)                                       | 4                   |

\*for detailed task, please refer to the Station + Task PDF

# STATIONS & TASKS

## Q BOOSTER TASKS

|    | Task   | Value<br>(millions) |
|----|--|---------------------|
| 31 | Food Tasks (Picture of you eating Local Food!)           | 1 per food          |
| 32 | Lunch Task (Picture of you eating!)                      | 2                   |
| 33 | Drinking Water (Group Picture with drinks)               | 1                   |
| 34 | Drink Snake Soup   | 2                   |
| 35 | Kam Tin Mural Village, Yuen Long (Find Your School Logo) | 1                   |



# TASKS

## PROPERTY SETS

|    | Task   | Value (millions) |
|----|--|------------------|
| 1  | Peak Tram Kennedy Station<br>(1 minute vlog) | 3                |
| 11 | St John's Cathedral<br>(Riddles)             | 5                |
| 16 | Kowloon Park<br>(Bird Park Quiz)             | 3                |
|    |  | (14)             |

**RED SET**

|    | Task   | Value (millions) |
|----|--|------------------|
| 3  | Bank of China Tower<br>(Central) (Group Picture) | 1                |
| 6  | Sir Cecil's Ride Stream<br>(Group Picture)       | 6                |
| 12 | Avenue of Stars (TST)<br>(Avenue Name Listing)   | 3                |
|    |  | (15)             |

**YELLOW SET**

|    | Task   | Value (millions) |
|----|--|------------------|
| 2  | HSBC Building (Central)<br>(Group picture with lion) | 1                |
| 14 | Wong Tai Sin Temple<br>(Bamboo Cylinder Shaking)     | 6                |
| 24 | HK Railway Museum (Tai Wo)<br>(Firm+)                | 8,5              |
|    |  | (25)             |

**BLUE SET**

# TASKS

## PROPERTY SETS

|    | Task  | Value (millions) |
|----|---|------------------|
| 9  | Tamar Park, Admiralty<br>(Pictures of Outdoor Activities) | 3                |
| 15 | Toy Market, Sham Shui Po<br>(Best deals hunting)          | 3                |
| 19 | Cultural Centre (TST)<br>(Song Guessing)                  | 4                |
|    |   | (12)             |

**PINK SET**

|    | Task(Green)                                  | Value (millions) |
|----|--|------------------|
| 10 | LKF (Instagram Reels)                        | 3                |
| 20 | Aberdeen Promenade<br>(One Breath Paragraph) | 6                |
| 21 | Wan Chai Golden<br>Bauhinia Square (Firm+)   | 2,1              |
|    |  | (14)             |

**GREEN SET**

|   | Task   | Value (millions) |
|---|--|------------------|
| 4 | Exchange Square (Central)<br>(Bear Imitation)          | 1                |
| 7 | Flower Market (Prince Edward)<br>(Flower Photo Taking) | 3                |
| 8 | Jordan/ Yau Ma Tei<br>(Temple Street)                  | 2                |
|   |  | (6)              |

**GREY SET**

# TASKS PROPERTY SETS

|    | Task                                     | Value (millions) |
|----|--|------------------|
| 13 | Choi Hung Estate<br>(Panorama Challenge) | 6                |
| 23 | Kam Tin Mural Village<br>(Firm+)         | 10,8             |
|    |  | (25)             |

**ORANGE SET**

|    | Task   | Value (millions) |
|----|--|------------------|
| 17 | Blue House [1] (Wan Chai)<br>(HK Menu Quiz)  | 4                |
| 18 | Blue House [2] (Wan Chai)<br>(MYS Menu Quiz) | 3                |
|    |  | (9)              |

**BLACK SET**

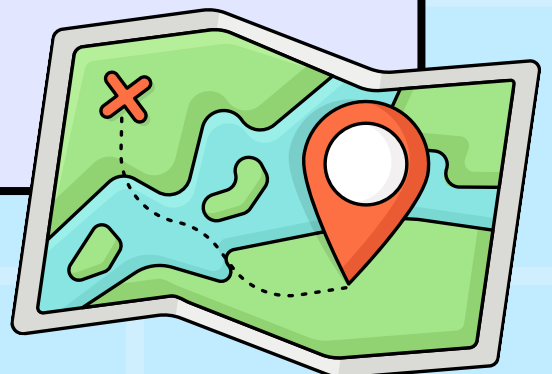
|    | Task(Purple)                   | Value (millions) |
|----|--------------------------------|------------------|
| 5  | Mystery Building (Group Photo) | 2                |
| 22 | TKO (Firm+)                    | 8,7              |
|    |                                | (14)             |

**PURPLE SET**

# EXTRA MAPS

We made our own version of Google Maps by colour coding the exact station locations! Fear no more, you shall never get lost!

[https://www.google.com/maps/d/edit?mid=1iVNEyqaPLJ8T11a43zcl8LWiL\\_O3ms&usp=sharing](https://www.google.com/maps/d/edit?mid=1iVNEyqaPLJ8T11a43zcl8LWiL_O3ms&usp=sharing)



# ACTION CARDS

## JUST SAY NO

Prevent any action from happening

Places you may obtain the card:

Lan Kwai Fong - 5x

Wong Tai Sin - 5x



## FORCED DEAL

Option to trade/ swap 1 property  
with other group

Places you may obtain the card:

Mystery Building - 3x

Blue House, Wan Chai - 3x



# ACTION CARDS

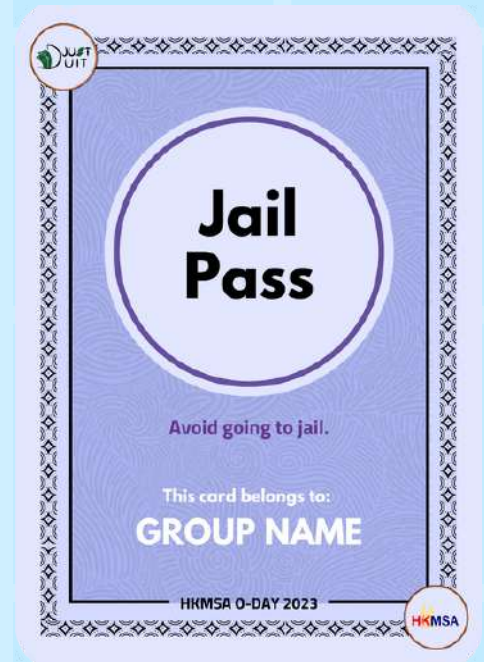
## JAIL PASS

**Avoid going to jail**

Places you may obtain the card:

Cultural Centre, TST - 2x

Tamar Park, Admiralty - 1x



**Again & Again**

Another attempt to set high score.

This card belongs to:  
**GROUP NAME**

HKMSA 0-DAY 2023

HKMSA

## AGAIN & AGAIN

**Another attempt to set a high score**

The top 4 groups that manage to get the most correct answers in Drawing Relay will receive one each.

# ACTION CARDS

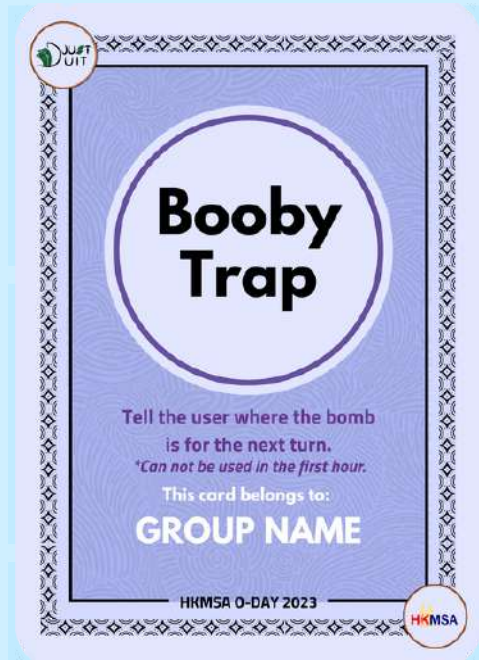
## BOOBY TRAP

Tell the user where the bomb is for the next turn

\*Cannot be used in the first hour

Places you may obtain the card:

Avenue of Stars, TST - 3x



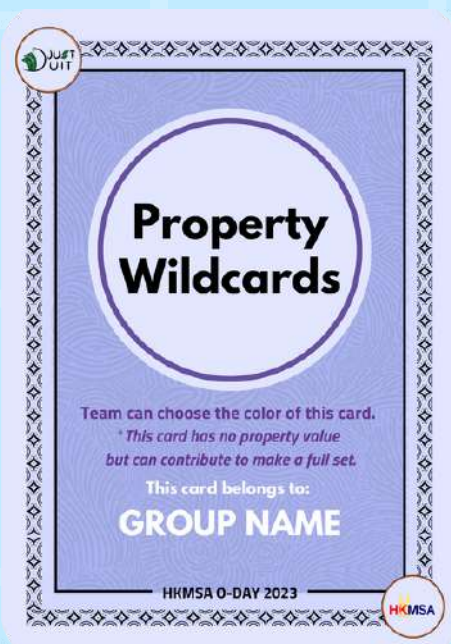
## PROPERTY WILDCARDS

Team can choose the colour of this card. This card has no property value but can contribute to make a full set.

Places you may obtain the card:

Kam Tin Mural Village - 2x

Sir Cecil's Ride Stream, North Point - 1x



# ACTION CARDS

## SLY DEAL

**Steal a property from another team**

*\*Limited to certain areas only*

Places you may obtain the card:

Kowloon Park - 3x

Avenue of Stars, TST - 2x

St John Cathedral, Central - 1x



## DEAL BREAKER

**Steal a whole set from another team**

Places you may obtain the card:

Hong Kong Railway Museum - 1x

Toy Market, Sham Shui Po - 1x

Aberdeen Promenade - 1x



# BOMB & JAIL SYSTEM

## THE BOMB

- 1) The bomb effective period will reset every hour (55 mins of effective period + 5 min of grace period), resulting in a total of six effective periods throughout the game. As the effective period resets, the station that is targeted with the bomb will change.
- 2) During each effective period, only one station will be implanted with a bomb.
- 3) Bombs will not reappear in the same station during different effective periods. Once a station has been cleared of a bomb and we enter a new effective period, that station will remain bomb-free.
- 4) The start of each new effective period (1), bomb ignition during the effective period (if applicable) (2) and end of the effective period (3) will be announced through a general announcement.

# CONSEQUENCES OF IGNITING A BOMB:

## UNLUCKY GROUP

A private announcement will be made exclusively to the unlucky group that ignited the bomb. This private announcement will provide specific details about the punishment that group must undertake at **Taikwun**. Please note that the punishment will vary for each effective period.

The unlucky group has the option to complete the punishment task immediately, or may choose to accumulate multiple punishments if it ignites multiple bombs and complete the punishment task(s) all at once. However, it is essential to submit the necessary evidence of completing each punishment task to us before the game ends and returning to HQ.

Please note that the unlucky group is still permitted to visit other stations and carry out tasks unrelated to the punishment.

# CONSEQUENCES OF IGNITING A BOMB:

## OTHER UNAFFECTED GROUPS

A general announcement will be made to inform all players that a bomb has been ignited at a particular station (the station name will be revealed). However, the identity of the unlucky group responsible for igniting the bomb will not be revealed in this general announcement.

## GENERAL

Any tasks associated with the station that was affected by the bomb will be deemed invalid for the current effective period. The game will continue with the groups (including the unlucky group) being able to carry on with their tasks in unaffected stations.

Once the effective period concludes, the tasks at the affected station will resume.

# SUBMISSION SYSTEM

Some tasks (**ALL Boosters + Task 10, 12, 13**) should be completed by uploading your files (pictures and videos) to the Google Drive folder by 5:20pm. Other tasks should be completed by uploading your files to WhatsApp Subgroup. Please find your group's folder in your WhatsApp Subgroup description box and upload your submissions there.

---

Any submissions past the deadline (**5:20pm**), will not be accepted.

---

When uploading the file, please rename it to the station location and property type. (**Examples in next page**)

---

Please remember to submit your evidences ASAP once you finish an individual task to claim that property.

---

Please make sure to return to HQ by 5:30pm, as we will proceed to the Final Spin-Off.

---

The grace period is from 5:30pm to 5:35pm, latecomers will face punishment.

# EXAMPLES OF FILE RENAMING:

## FIRM TASK

“Take a group picture with the lion statues Stephen and Stitt”



HSBC  
LION  
(FIRM)

## CHALLENGE TASK

“Shoot an Instagram reel of your best dance moves at Lan Kwai Fong street”



LKF  
(CHALLENGE)

## FIRM+ TASK (FIRM)

“Get a close up selfie group picture with the Golden Bauhinia”



WAN CHAI  
BAUHINIA  
(FIRM)

# EXAMPLES OF FILE RENAMING:

## FIRM+ TASK (CHALLENGE)

"Film a video of the tongue twister"



WAN CHAI  
BAUHINIA  
(CHALLENGE)

## BOOSTER TASK

"Get a group picture of everyone in the team having a drink"



DRINK  
WATER  
GOOD  
(BOOSTER)

## PRE-FINAL SPIN-OFF

1. The Property Distribution Board will be displayed to all participants. It shows all the properties acquired by each group during the game.
2. The total property values of each group will be displayed on the screen. Meanwhile, you can keep track of the action cards acquired by your group in the Group Progress Sheet.
3. Throughout the game, groups will acquire various action cards. Each group will have the opportunity to play these cards based on their chosen position.
4. The groups will choose their play-off sequence in the Final Spin-Off based on the time they return to HQ. The first group to return will get the chance to choose their desired play-off sequence followed by subsequent groups.
5. Each group needs to strategize and decide on the most advantageous order to play their cards based on their acquired properties and game objectives.

## FINAL SPIN-OFF

1. Once the play-off sequence is determined, each group will take turns playing their action cards in the chosen sequence. Only one card can be used against other groups per round (unless it is a Just Say No to defend your group).
2. Each group can choose to skip during the round but must use one card in the subsequent round (unless the remaining action card(s) are Just Say No).
3. The Property Value will be updated accordingly once there is a change in the ownership of properties.
4. The Final Spin-Off shall end once all the action cards are used up/the groups choose not to use them.

## BAD WEATHER ARRANGEMENTS

In the event of rain, Jobamas should assess the level of danger based on the situation and allow the team to come to a **consensus** on whether or not to continue doing tasks.

If a team decides to continue with tasks, participants are allowed to **complete the task** in a **sheltered area**, such as an MTR station, if applicable.

If a group decides to complete the task in a sheltered area, they must **inform** their corresponding **HQ EXCO** for verification.

To ensure fairness, each group is **required to visit** the designated location and take a **group picture** as proof of their presence.

It is recommended that each group checks the **weather conditions** of the area they plan to visit and considers the **walking distance** to that location.

In the event that the overall situation worsens, such as severe weather conditions or safety concerns, there will be an **official announcement** made through the designated **WhatsApp community**. Participants are advised to regularly check the WhatsApp community for any updates or announcements regarding the city hunt.